

Getting started with your Wegovy® treatment

Pr **wegovy**®
semaglutide injection

1 BEFORE picking up your prescription: Sign up for WegovyCare®

Enrol in the WegovyCare® Patient Support Program by scanning this QR code with your smartphone or by visiting wegovy.ca* today!

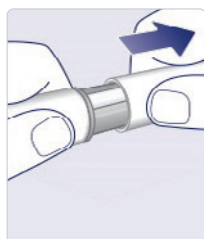


WegovyCare® is valid for Canadian residents only. Program availability may change or end at any time at the manufacturer's discretion. For more details, see the Program terms and conditions.

2 Learn how to use your Wegovy® FlexTouch® pen in five steps

Wegovy® is taken as an injection under the skin and is available in a carton of 1 multi-use, disposable, pre-filled FlexTouch® pen. Your Wegovy® treatment will start at a low dose of 0.25 mg, once weekly. Your doctor will slowly increase your dose over 16 weeks with the aim of reaching the recommended maintenance dose of 2.4 mg once weekly.

STEP 1



Attach your new needle and pull off both needle caps

STEP 2



Check the flow of your new pen

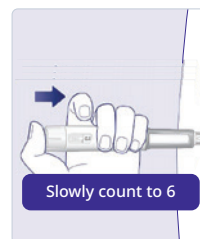
REMINDER! You only need to check the flow if you are using a **NEW** pen. If your pen is already in use, **DO NOT** check the flow and move to STEP 3.

STEP 3



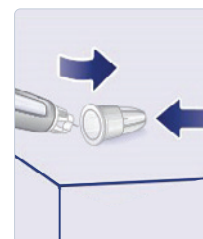
Select your dose

STEP 4



Inject your dose

STEP 5



Carefully dispose of your needle

It is important that you understand how to use your Wegovy® FlexTouch® pen properly before you use Wegovy® for the first time. Remember to read the full instructions for use in the Patient Medication Information leaflet that came with your prescription AND have your healthcare professional show you how to use it.



Watch this step-by-step video to learn how to take Wegovy® with the FlexTouch® pen.



3

Book your next check-up with your doctor

Your doctor will assess how your Wegovy® treatment is going on a regular basis and may tell you to change your dose if necessary. Remember not to stop using Wegovy® without talking to your doctor.

* The website wegovy.ca is open to the general public.

wegovy[®]care[®]

Patient Support Program

A FREE adult patient support program that focuses on small steps to help you work towards your weight management goals while taking Wegovy[®].

Sign up for FREE online support

Through WegovyCare[®],
some of the services available to you include:



Live support

Speak to a program educator for any questions about treatment and support



Coverage

Connect with a reimbursement navigator to see if you have private insurance



Helpful resources

Download information, read timely informative support articles, and watch a video on administering Wegovy[®]

Enrol in the WegovyCare[®] Patient Support Program
by scanning this QR code with your smartphone
or by visiting wegovy.ca* today!

Use this DIN to access patient materials: 02528509



* The website wegovy.ca is open to the general public.
DIN, drug identification number.



All trademarks and registered trademarks are the property of their respective owners. Wegovy[®], WegovyCare[®], FlexTouch[®], and Apis Bull Design[®] are registered trademarks of Novo Nordisk A/S used under licence by Novo Nordisk Canada Inc.
© Novo Nordisk Canada Inc.
Novo Nordisk Canada Inc., tel: (905) 629-4222 or 1-800-465-4334.
www.novonordisk.ca CA23SEMO00033E

Pr **wegovy**[®]
semaglutide injection